



# DECKING SUPERSTORE

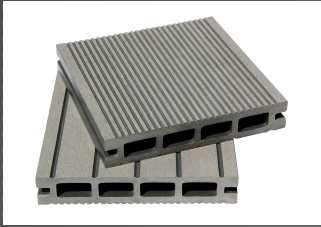
Composite Decking Installation Guidelines Earl and Viscount Range

# OVERVIEW

- ▶ Thank you for choosing composite decking boards from Decking Superstore, our boards are designed to offer an alternative to traditional timber decking offering outstanding durability and longevity.
- ▶ Please read carefully the following instructions prior to installation, if in doubt seek a qualified professional to install your new deck, incorrectly installed composite decking boards may invalidate your warranty.
- ▶ Please confirm any local authority approvals are required prior to installation.
- ▶ Installation guide for Earl and Viscount products.

# COMPONENTS

Decking Board



Start Finish Clip



L Shape Trim



Hidden Fastener



Poly Pins



## Tools Required :

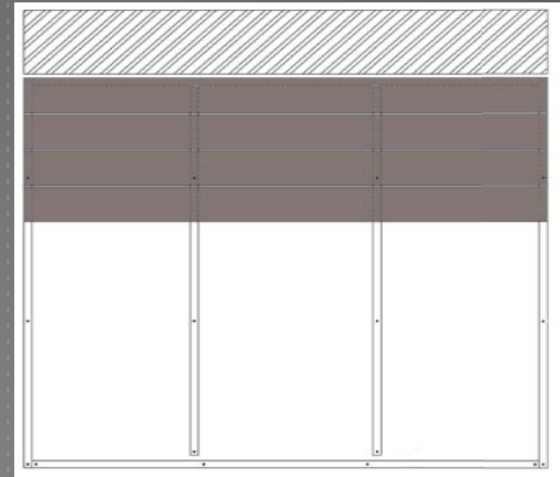
- Hand drill
- Screw driver
- Saw
- Safety goggles
- Safety gloves

**GETTING STARTED** it is important to decide upon the orientation of your deck prior to starting, a maximum of 400mm span is required between your composite or timber sub floor and a minimum of 45mm x 95mm thickness and direction of sub floor as follows, for wide or long deck spans adequate cross joist supports must be used, it is also important to have a slight slope of approx. 1% to 1.5% to allow water to clear

Perpendicular to wall



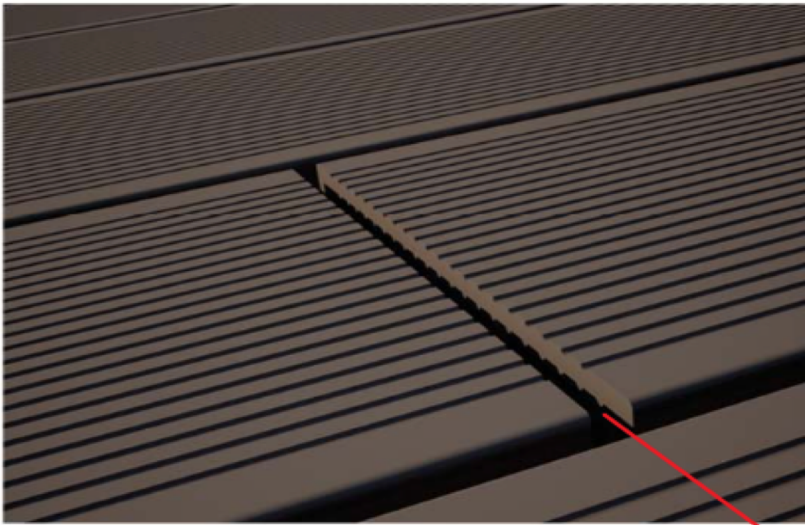
Parallel to wall



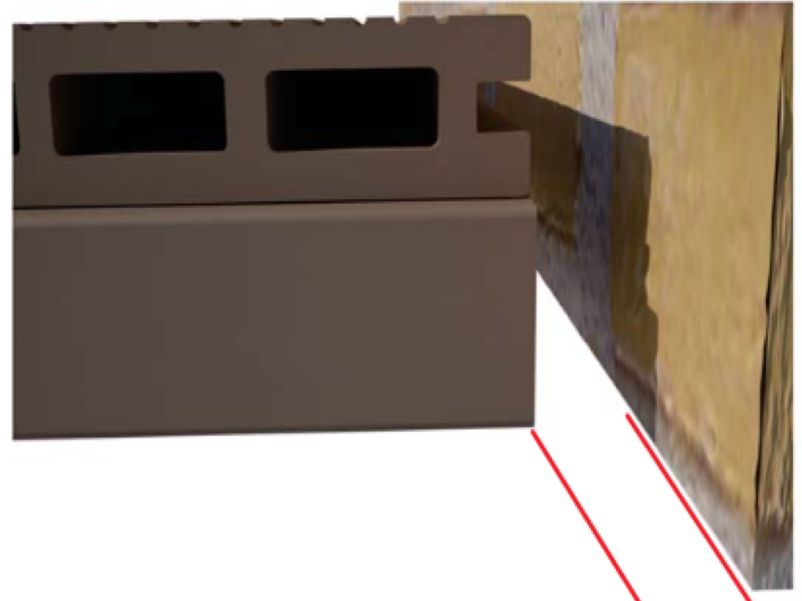
Composite decking must be installed onto a substructure to allow air flow underneath this allows for drying and drainage a minimum of 25mm clearance should be allowed below.

**EXPANSION** as UK seasons change temperatures do also, our composite deck boards will expand and contract as these temperature change so please pay particular attention to the following and allow a minimum of 5mm spacing when installing between boards and 10mm between walls :

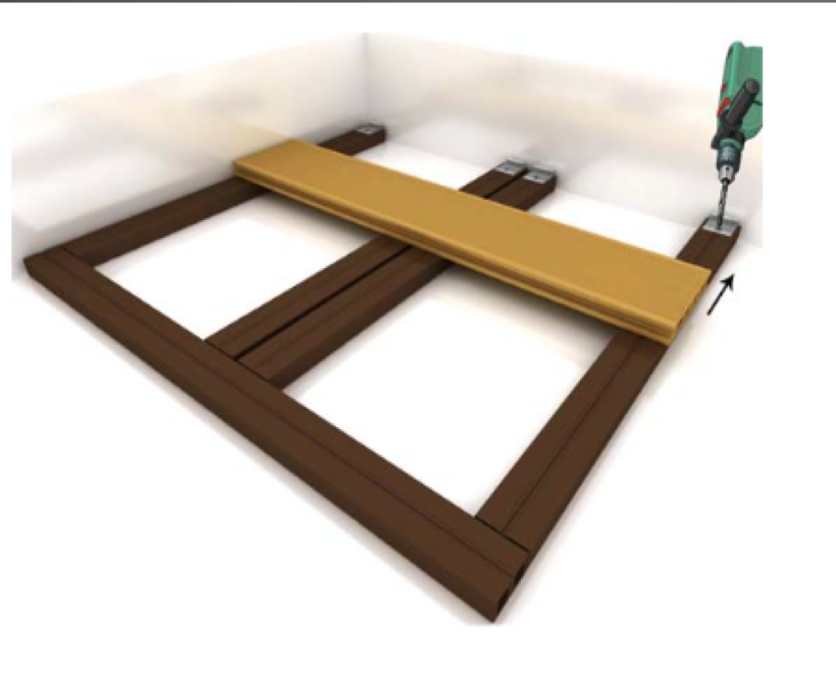
Between the deck boards



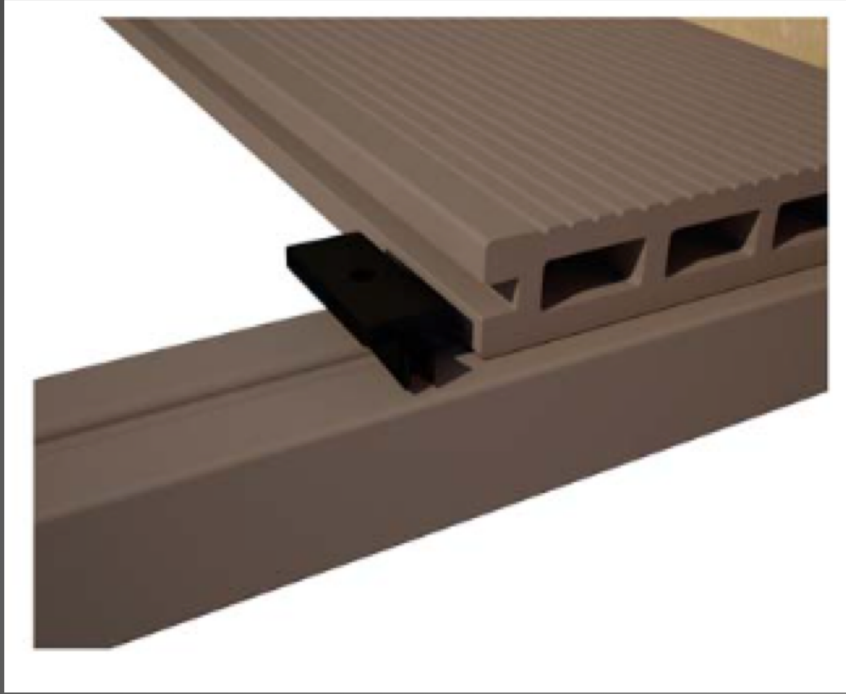
Between the wall and deck board



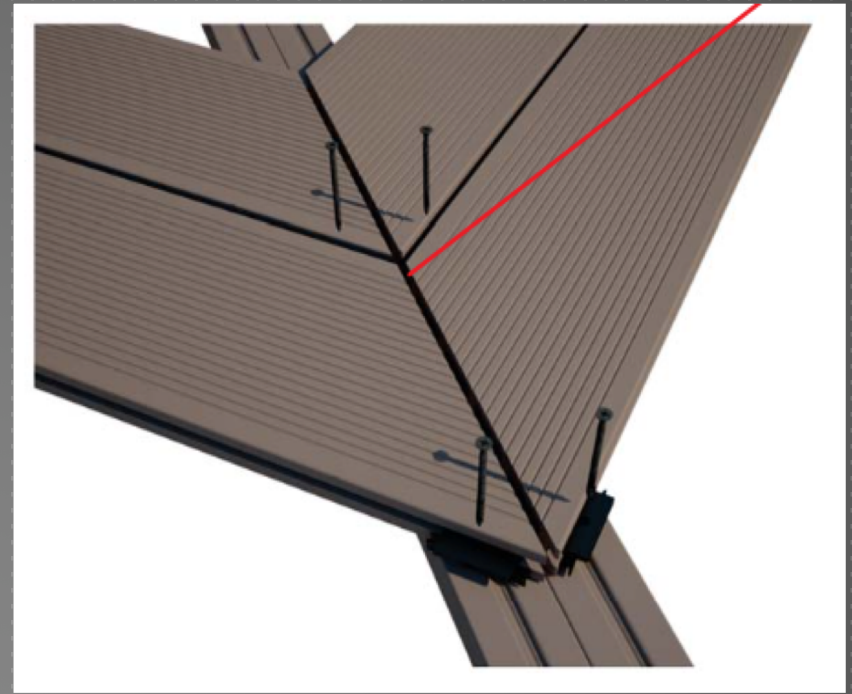
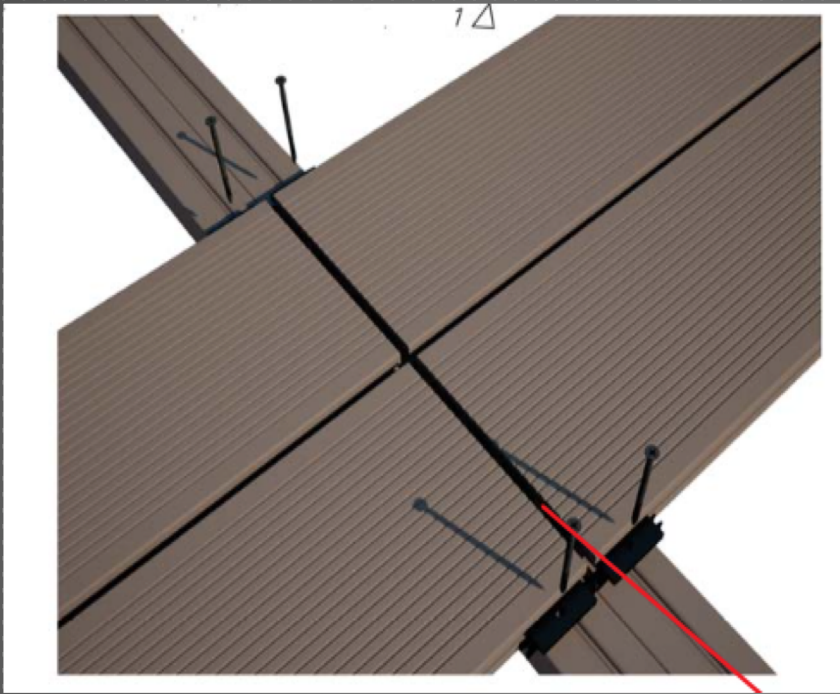
**INSTALLATION STEP 1:** insert start finish clip as shown on first board and repeat every 400mm along the edge of all starter boards, this will lock your board in place



**INSTALLATION STEP 2** insert hidden fixings in place as per diagram and should be placed every 400mm where joists meet, insert hidden screw in place and screw down, be careful not to damage board with drill chuck.

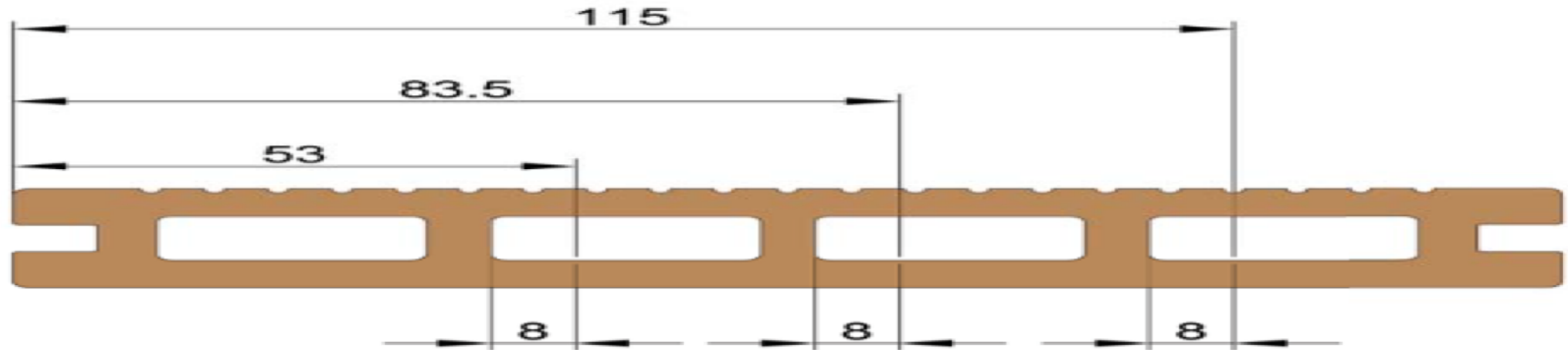


**INSTALLATION STEP 3** : when joining boards a minimum of 5mm expansion gap should be made and additional hidden fixings should be used at the joining point, boards should be supported underneath with additional joists allowing spacing between joists to allow water to escape, do not share a joist as due to expansion boards could be left unsupported.





**INSTALLATION STEP 4** : if the final board requires cutting it is important that the overhang is no more than 8mm for the board to locate securely within the start finish clip to lock the final board in place.



**INSTALLATION STEP 5** : use a finishing angle to neatly finish the edge, use decking screws or poly pins, a pilot hole must be drilled fixed directly onto the joist placing a fixing every 400mm



# CARING FOR YOUR DECK

Your deck has been designed to give you many years of trouble free use with a minimum of maintenance , the colour will fade slightly over the first few months as it weathers and then the colour will stabilise and give you many years of enjoyment .

To keep your deck in tip top condition it is advisable to remove marks as soon as possible using water and mild detergent using a soft sponge or cloth, for more stubborn marks i,e, wine, ketchup, cola, coffee etc scrub well with a diluted bleach solution and then rinse with large amounts of water





## CONTACT DETAILS

Decking Superstore is trading name for  
Plastideck Limited

Co Registration Number 10390705

5 Olympic Court,  
Boardmans Way,  
Whitehills Business Park,  
Blackpool, Lancashire  
FY4 5GU

01253 858885

[www.deckingsuperstore.co.uk](http://www.deckingsuperstore.co.uk)  
[sales@deckingsuperstore.co.uk](mailto:sales@deckingsuperstore.co.uk)